



Single & Multifamily Homes • Mixed-Use Buildings

We make the Difference

For over 50 years of continuous consulting practice, CMA Architects & Engineers has provided design and constructing management services to all sectors of the residential market in Puerto Rico.

From designing single high-end family homes to high-rise multifamily buildings, CMA has been supporting the industry with quality solutions for the ever changing residential needs of today's society.





Expertise

Through the years, CMA Architects and Engineers has developed many residential projects that meet current code requirements and global tendencies, resulting in a well rounded project that enhances the end user residential standards.

Our staff encompasses **over 90 professionals** in the fields of architecture, planning, civil, transportation, water resources, environmental and electrical engineering, as well as cost estimating and construction management. Specialty certifications such U.S. Green Building Council LEED and vast knowledge in federal housing regulations, makes out team a valuable asset to any housing project.

With **over five decades** of architectural, engineering design, permitting, inspection and construction management, we can provide our clients with a well rounded project, easing the challenges of project delivery from conception to execution.



Single & Multi-Family Homes • Mixed-Use Buildings

CMA
ARCHITECTS &
ENGINEERS LLC



Services

*Your one-stop shop for design, permitting,
construction management and project administration*

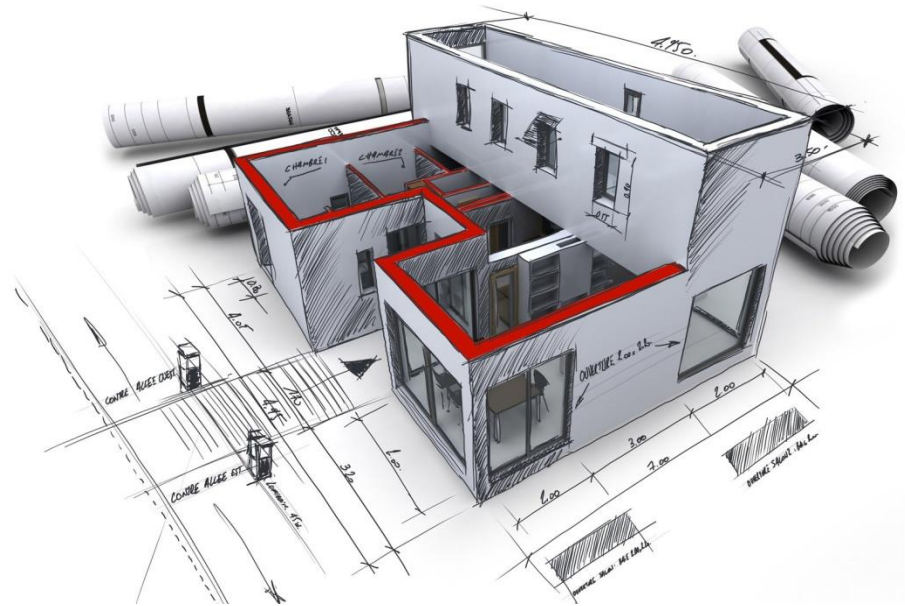
Single & Multi-Family Homes • Mixed-Use Buildings

CMA
ARCHITECTS &
ENGINEERS LLC

Standard Services

CMA Architects and Engineers LLC provides services for all the project stages: Planning, Design, Construction and Post -Occupancy:

- Land Use Planning , Community Development & Site Planning and Design
- Environmental Assessments and Permitting at Local and Federal Agencies.
- Feasibility and Site Selection Studies
- Existing Buildings Evaluation
- Architecture and Interior Design
- Master Planning
- Electrical, Mechanical, Structural, Civil, Water Resources, Instrumentation and Process Engineering
- Project and Construction Management
- Observation and other Field Services during Construction
- Cost Estimates and Value Engineering
- Contract Documents and Specifications
- Life Safety Evaluations
- Way finding signage



Single & Multi-Family Homes • Mixed-Use Buildings



Specialized Services

In addition to the conventional architectural and engineering professional services offered through our firm, CMA can provide our clients a myriad of services that considers today's technological advancements and green building strategies. Some of those are as follows:

- 3D Renderings
- Sales Brochures
- Owner Representation
- Solar Power
- Water & Energy Conservation
- Smart Home Systems
- LEED Certification
- Interior Design
- Landscaping Design
- VOCs Mitigation



Master Planning & Mixed-Use Buildings

Single & Multi-Family Homes • Mixed-Use Buildings

Costa Del Sol
Resort & Country Club

CMA participated with Interlink Group in a master plan proposal for the construction of a 160 guestroom hotel with 720 condo resort units, 125 tourist villas and 125 lots for single family homes.

The development will also include the construction of the main entrance and access road, recreational areas . This proposal was to be built in the coast of the Municipality of Aguadilla.

Location

Aguadilla, Puerto Rico

Services

Planning Consultant



St. Regis at Bahia Beach, Resort & Country Club

CMA was part of the design team for the first five-star hotel in Puerto Rico. The project consists of low rise buildings spread out on the beach front property with a total of 139 keys.

Amenities in the site are a Robert Trent Jones Jr. Golf course, Remede Spa, magnificent pools and great ocean views. CMA was responsible for the design development and construction documents, and services during construction.

Location

Rio Grande, Puerto Rico

Services

Planning, Environmental, Permitting,
Electrical, Architecture, Structure,
Civil, Mechanical, Plumbing



Cupey Station Proposal

Development of a proposal for a mixed-use site to accommodate office, retail restaurants and residential. The main focus of the project was to activate the urban fabric by virtue of its location within the city and its proximity to the train station at Cupey.

Retail spaces were located ant the ground floor to encourage the pedestrian activity as well as the restaurants and cafes. A multi level parking structure incorporated a green screen to pull form the ground level vegetation into the more private levels of the offices and residential.

Location

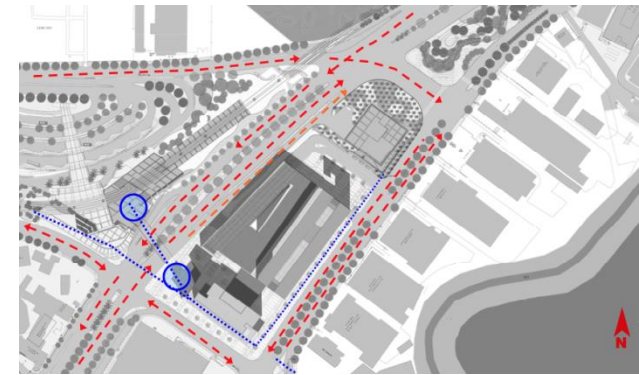
San Juan, Puerto Rico

Partners

Muños Holding Inc, Hillier

Services

Planning, Urban Design, Schematic Design.





Multi-Family Homes

Dorado Beach - Ritz Carlton Reserve – West Beach

Single & Multi-Family Homes • Mixed-Use Buildings

Cosmopolitan

We teamed with RTKL in the initial conceptual and schematic design phase and then continued the design development and construction documents of this high-end residential condominium building in Miramar, overlooking the Condado Lagoon. The building has 59 apartments with lagoon and ocean views distributed 4 per floor: 4 sub-penthouses, and a grand penthouse on its own floor.

Amenities include a infinity edge pool, gym and social gathering area. The project was inaugurated on October 24, 2009.

Location

Miramar, Puerto Rico

Services

Planning, Environmental, Permitting,
Electrical, Architecture, Structure,
Civil, Mechanical, Plumbing



Ritz Carlton Reserve West Beach

These luxury Ritz-Carlton residences have 2-4 bedrooms and ocean views. Some of the residences have elevated private pools. Design for the residences takes its cues from centuries of multifaceted influences: indigenous Taíno Indians, Spanish explorers, Caribbean plantations and Laurence S. Rockefeller, who introduced the world to the Caribbean's first luxury eco-resort.

Amenities include elevators and private garages. We teamed with EDSA for landscape site planning, and SB for building architectural design.

Location

Dorado Beach, Puerto Rico

Services

Planning, Environmental, Permitting,
Electrical, Structure, Civil, Mechanical,
Plumbing



Torre del Cardenal

This is an elegant high-rise building of 144 apartments from 1,800 up to 3,350 SF. The typical apartment consists of three bedrooms and two bathrooms, with a separate area for laundry, large living spaces, among which is the modern and comfortable kitchen with island and fine cabinets with granite countertops.

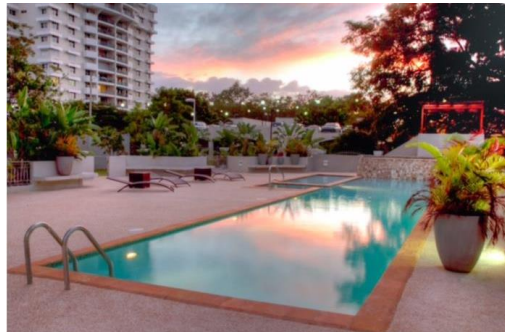
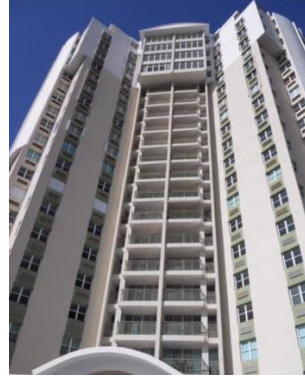
Building amenities include a cozy recreational area with swimming pool, fitness center, children's playground, gazebo and a multipurpose room for activities.

Location

Hato Rey, Puerto Rico

Services

Planning, Environmental, Permitting, Electrical, Architecture, Structure, Civil, Mechanical, Plumbing.



Palma Real

This prestigious high-rise residential complex includes an impressive cantilevered roof serving as its Port Cochere and a suspended staircase to access the lobby is a good example of resilient design that has endured the test of time. The 3-5 bedroom apartments are oriented to maximize ventilation and offer ocean and lagoon views.

Amenities include a comfortable lobby with elegant finishes, covered parking and swimming pool with a kids wading pool.

Location

Miramar, Puerto Rico

Services

Planning, Environmental, Permitting,
Electrical, Architecture, Structure,
Civil, Mechanical, Plumbing.



Parque de Loyola

This residential complex is in the heart of Hato Rey, and is composed of two residential towers that share common areas. To maximize the site, an elevated deck was used to cover parking spaces and accommodates basketball and tennis courts.

Common areas include a swimming pool with kids area, a gazebo, kids playground and an activities areas. The 2nd north tower at the north of the site was built after the original tower and planned with minimal interruptions to the already occupied tower.

Location

Hato Rey, Puerto Rico

Services

Planning, Environmental, Permitting,
Electrical, Architecture, Structure,
Civil, Mechanical, Plumbing.





Townhouses

Single & Multi-Family Homes • Mixed-Use Buildings

Ponce Marina

Development of a master plan and the preliminary design - including civil and architectural design - for a mixed use complex within a 80 acre parcel in the Canas district of Ponce.

Among the features this development would provide its users are: a 250 slip marina, 50 guestroom hotel, club house, commercial spaces and recreational facilities.

Location

Ponce, Puerto Rico

Services

Planning, Urban Design, Schematic Design & Tridimensional Rendering.





Single Family Housing

Single & Multi-Family Homes • Mixed-Use Buildings

Botanical Villa

Dorado Beach Ritz Carlton Reserve

This residence is a spacious, ultra-luxurious four to five-bedroom single family home steps from the palm-tree lined sands of the legendary Dorado East Beach shore. The Botanical Villas are distributed on a single level with an optional that has an additional master Suite on a second level. All bathrooms have exterior showers and stone tubs. They have their own private heated swimming pools.

The main living space has 15' high ceilings. Natural stone accent walls and horizontal roof banding give the house a modern look that fits with luscious tropical Garden.

Location

Dorado, Puerto Rico

Services

Architecture, Engineering



Dorado East Villas

Dorado Beach Ritz Carlton Reserve

The East Villa, a Ritz-Carlton residence, is a spacious, ultra-luxury five-bedroom single family home. They are located at Dorado's East Beach over approximately one acre land each.

It is a 2 level home, with exterior showers, stone tubs, and a private heated swimming pool. The main living spaces have 15' high ceilings. Natural stone accent walls and horizontal roof banding give the house a modern look that fits with luscious tropical Garden. Homeowners are welcome to make their own finish selections to call this villa home.

Location

Dorado, Puerto Rico

Services

Architecture, Engineering

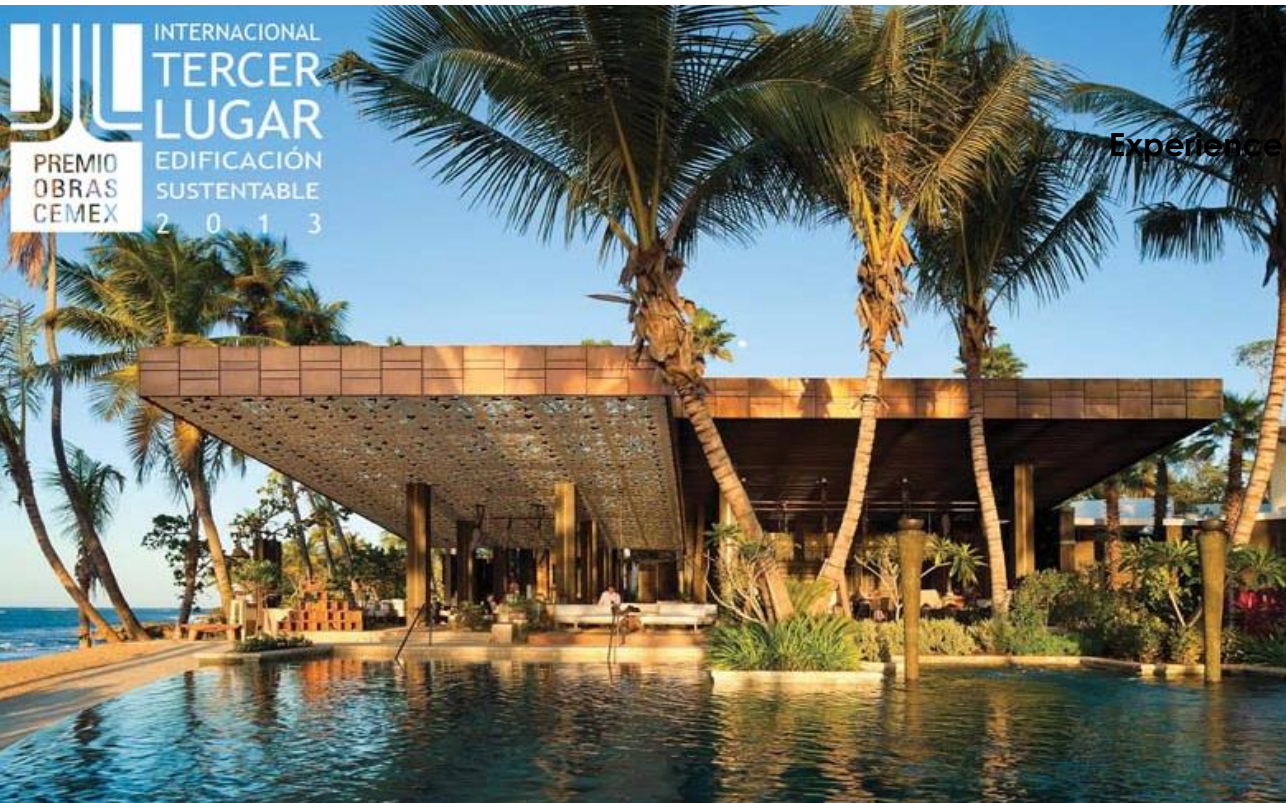




Recognitions

*Excellence through value services
and commitment to our clients*

Single & Multi-Family Homes • Mixed-Use Buildings



Experience

CEMEX International Design competition

CMA formed part of a team that won third place at CEMEX International competition in the Sustainability category.

Project:
Dorado Ritz Carlton Reserve

BUILDING AWARD



<http://www.cemex.com/MediaCenter/BuildingAwardInternational.aspx>

Single & Multi-Family Homes • Mixed-Use Buildings

CMA
ARCHITECTS &
ENGINEERS LLC



CEMEX International Design competition

CMA formed part of a team that won second place at CEMEX International competition in the Infrastructure category.

Project:
Palmas Del Mar Yacht Club



BUILDING AWARD



Single & Multi-Family Homes • Mixed-Use Buildings

CMA
ARCHITECTS &
ENGINEERS LLC



PR Realtor Association Award

CMA was awarded a recognition by the PR Realtor Association in the category of Environmentally Sustainable Development Project

CMA as the lead architectural and engineering firm provided a full range of services from environmental, planning and land development work to site and off-site infrastructure.

Project:
Los Prados Development





Excellence • Commitment • Experience